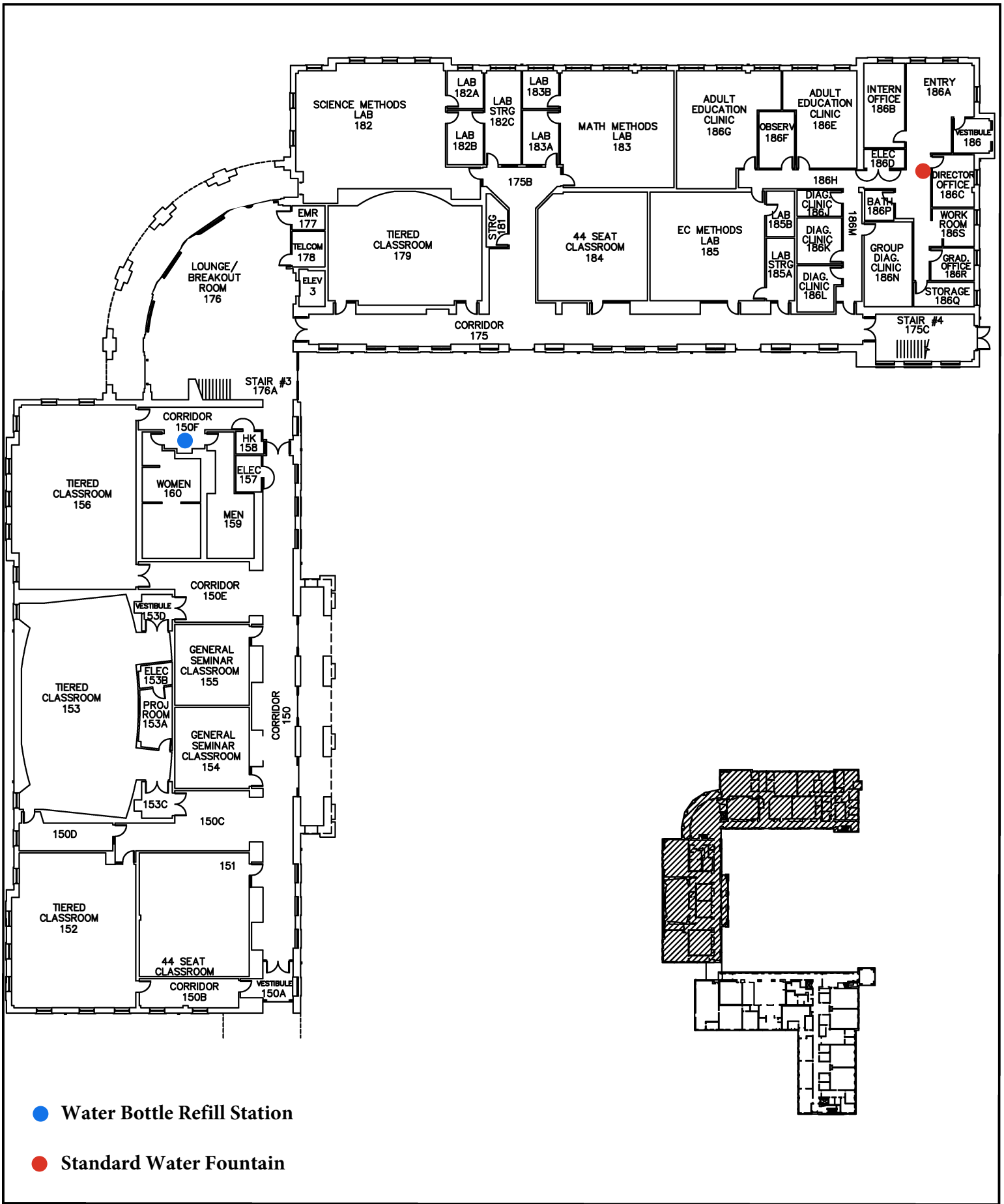


DWG. NO.:	REVISION DATE:
A-1.1	08-22-2018
BLDG. CODE:	SCALE:
TE	NTS
	DESIGN BY:
	PLA
	CHECKED BY:
	JCD

**RECORD FLOOR PLAN
CONWAY HALL**

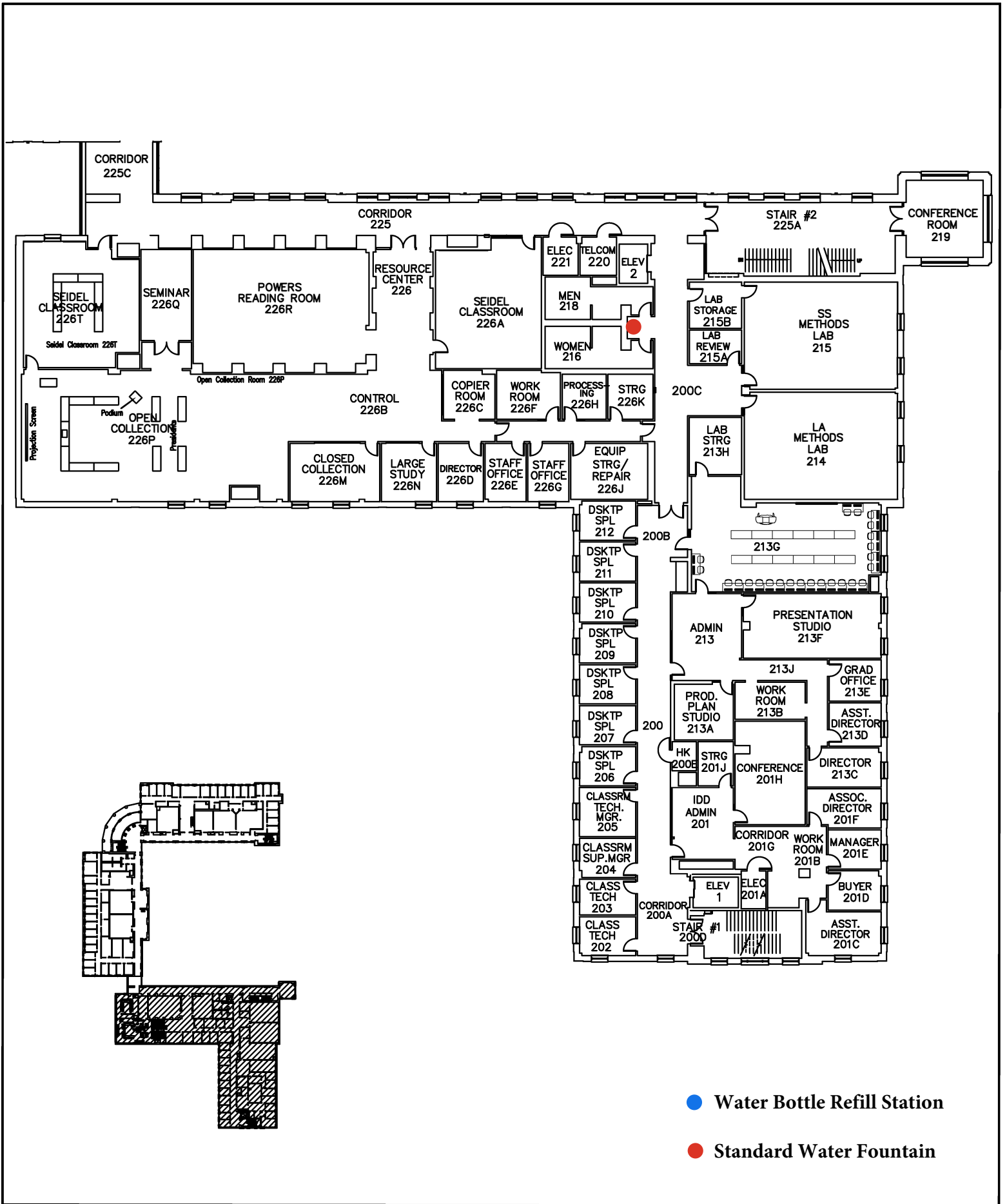
FIRST FLOOR PART PLAN

SALISBURY UNIVERSITY
 FACILITIES PLANNING & CAPITAL PROJECTS
 ARCHITECTURAL AND ENGINEERING SERVICES
 1101 CAMDEN AVENUE
 SALISBURY, MARYLAND 21801
 410 - 543 - 6215



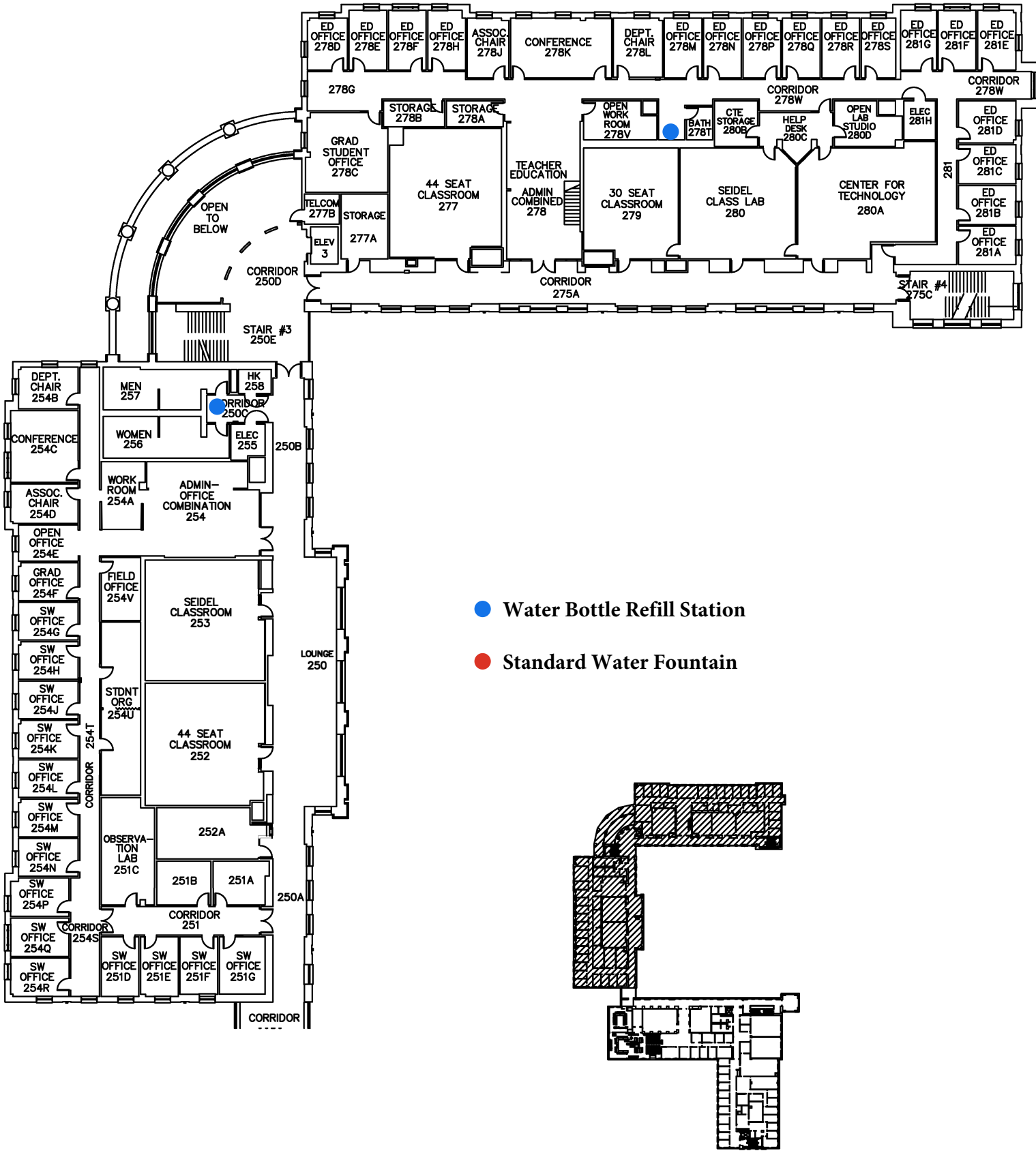
- Water Bottle Refill Station
- Standard Water Fountain

DWG. NO.: A-1.2	REVISION DATE: 08-22-2018 SCALE: NTS DESIGN BY: PLA CHECKED BY: JCD	RECORD FLOOR PLAN CONWAY HALL	FIRST FLOOR PART PLAN	SALISBURY UNIVERSITY FACILITIES PLANNING & CAPITAL PROJECTS ARCHITECTURAL AND ENGINEERING SERVICES 1101 CAMDEN AVENUE SALISBURY, MARYLAND 21801 410 - 543 - 6215
---------------------------	---	--	------------------------------	--



- Water Bottle Refill Station
- Standard Water Fountain

DWG. NO.: A-2.1	REVISION DATE: 08-22-2018	RECORD FLOOR PLAN CONWAY HALL	SECOND FLOOR PART PLAN	SALISBURY UNIVERSITY FACILITIES PLANNING & CAPITAL PROJECTS ARCHITECTURAL AND ENGINEERING SERVICES 1101 CAMDEN AVENUE SALISBURY, MARYLAND 21801 410 - 543 - 6215
BLDG. CODE: TE	SCALE: NTS			
	DESIGN BY: PLA			
	CHECKED BY: JCD			



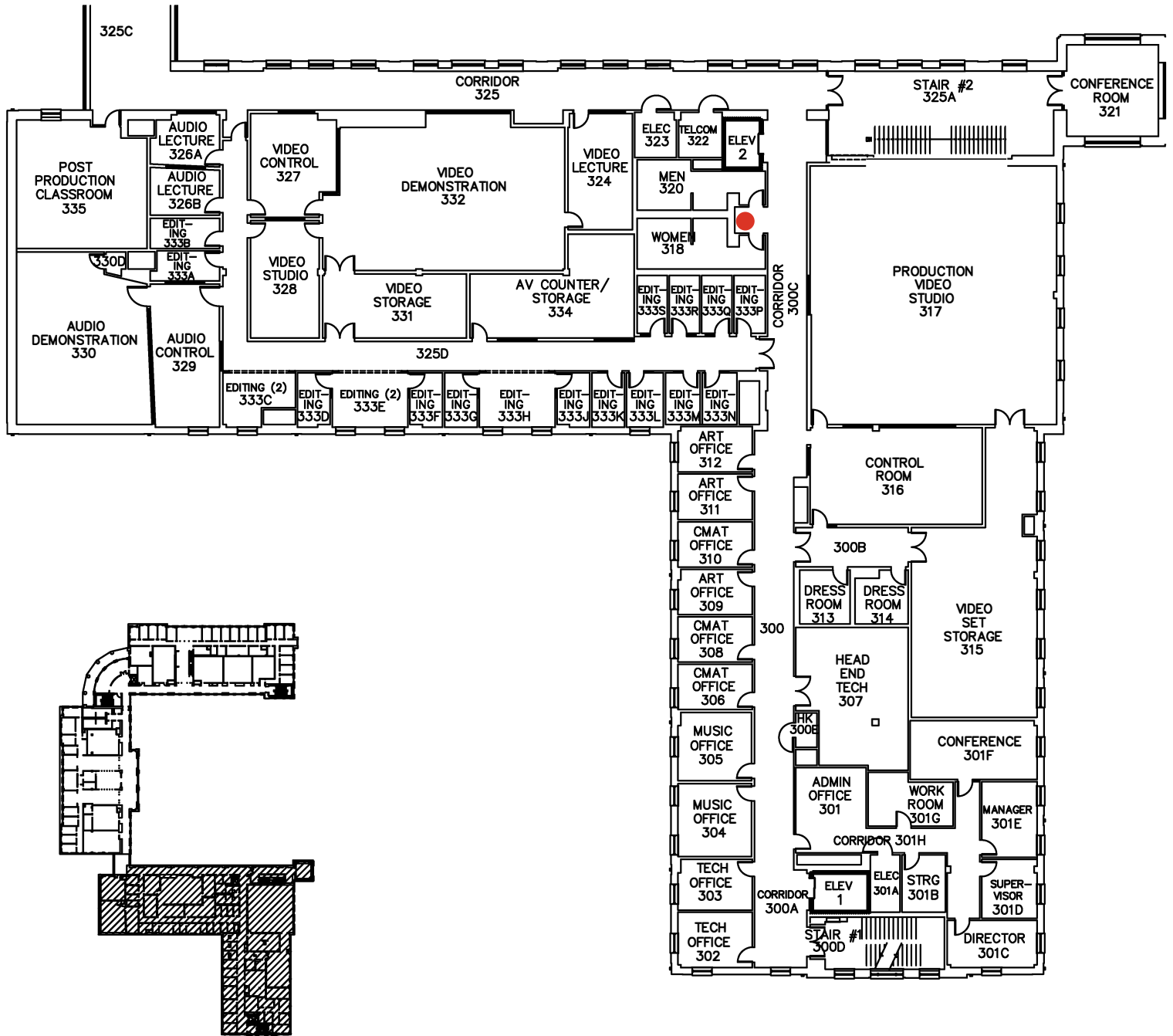
- Water Bottle Refill Station
- Standard Water Fountain

DWG. NO.:	REVISION DATE:
A-2.2	08-22-2018
BLDG. CODE:	SCALE:
TE	NTS
	DESIGN BY:
	PLA
	CHECKED BY:
	JCD

RECORD FLOOR PLAN
CONWAY HALL

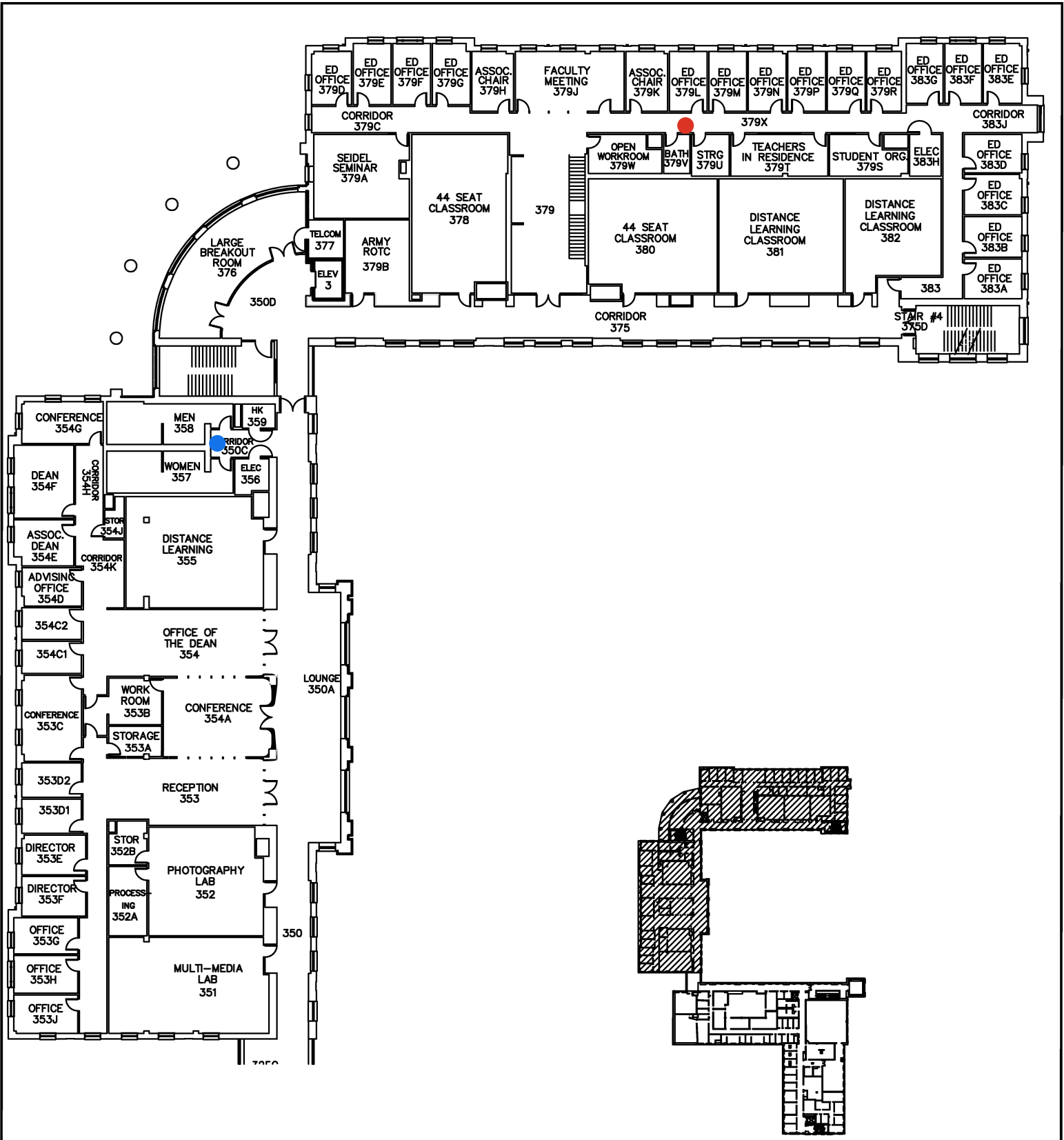
SECOND FLOOR PART PLAN

SALISBURY UNIVERSITY
FACILITIES PLANNING & CAPITAL PROJECTS
ARCHITECTURAL AND ENGINEERING SERVICES
1101 CAMDEN AVENUE
SALISBURY, MARYLAND 21801
410 - 543 - 6215



- Water Bottle Refill Station
- Standard Water Fountain

DWG. NO.:	REVISION DATE:	RECORD FLOOR PLAN CONWAY HALL	THIRD FLOOR PART PLAN	SALISBURY UNIVERSITY FACILITIES PLANNING & CAPITAL PROJECTS ARCHITECTURAL AND ENGINEERING SERVICES 1101 CAMDEN AVENUE SALISBURY, MARYLAND 21801 410 - 543 - 6215
A-3.1	09-22-2017			
BLDG. CODE:	SCALE: NTS			
TE	DESIGN BY: PLA			
	CHECKED BY: JCD			



- Water Bottle Refill Station
- Standard Water Fountain

DWG. NO.:	REVISION DATE:
A-3.2	08-22-2018
BLDG. CODE:	SCALE:
TE	NTS
	DESIGN BY:
	PLA
	CHECKED BY:
	JCD

RECORD FLOOR PLAN
CONWAY HALL

THIRD FLOOR PART PLAN

SALISBURY UNIVERSITY
FACILITIES PLANNING & CAPITAL PROJECTS
ARCHITECTURAL AND ENGINEERING SERVICES
1101 CAMDEN AVENUE
SALISBURY, MARYLAND 21801
410 - 543 - 6215